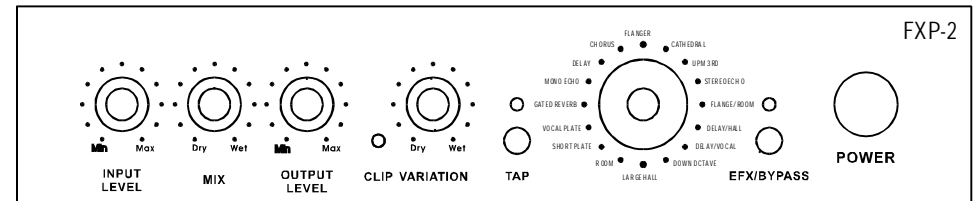


INSTRUCTION MANUAL

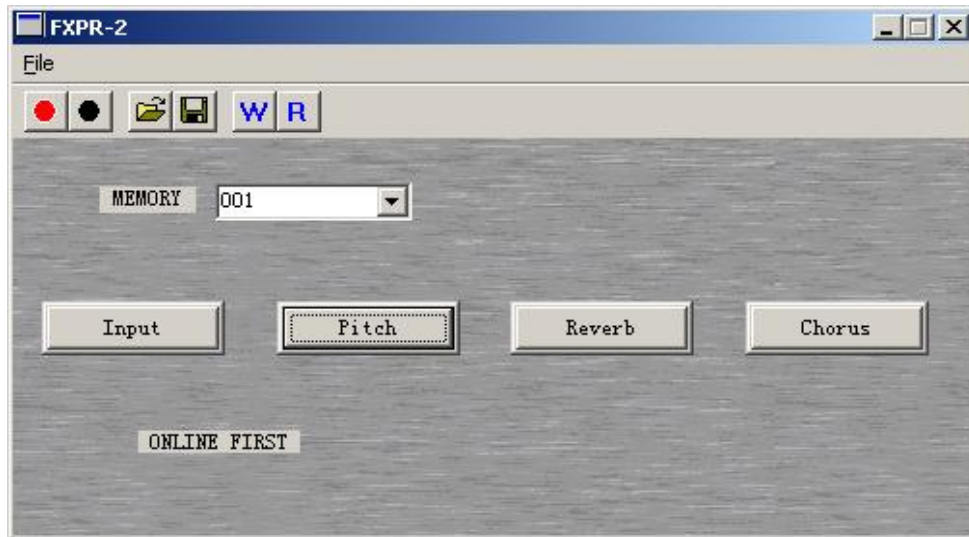


DIGITAL EFFECTS PROCESSOR

FXP-2

16 TYPES OF EFFECTS SET BY PC AS FOLLOWS:

Connect the RS232 port with COM port of PC by the RS232(serial port) line. Then you can browse, change and save the effects.



STEP:

Click the CONNECT button (the red round button in the toolbar) at first.

- 1) Write[PC->Module] (the button with " W " letter in the toolbar): Update the effects to the unit.
Select the memory number (effect number) after the effect is adjusted, click " W " (Write[PC->Module]) button. The memory number is automatically increased by 1 and " OK " is displayed if operation succeeds. " ERROR " displayed if operation fails.
- 2) Read [Module->PC] (the button with " R " letter in the toolbar): Browse or check effects in unit.
Select the memory number(effect number). Click " R " (Read [PC->Module]) button on The PC display the unit' effects. " OK " is displayed if operation succeeds. " ERROR " displayed if operation fails.
- 3) LoadFile
Load the ready file of 16 effects from PC to the unit directly. " OK " is displayed if operation succeeds. " ERROR " displayed if operation fails.
- 4) SaveToFile
Save the ready 16 effects to the file in PC. " OK " is displayed if operation succeeds. " ERROR " displayed if operation fails.
- 5) Select the COM port
Click the COM button (the black round button in the toolbar) to select the COM port in the dialog box.

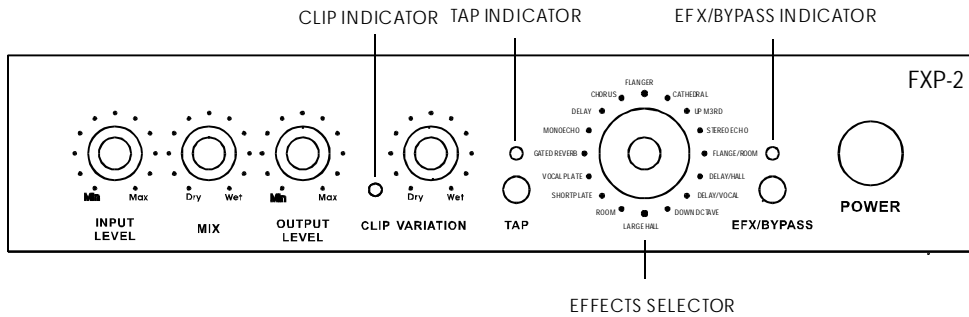
WARNING FOR YOUR PROTECTION PLEASE READ THE FOLLOWING:

1. KEEP THESE INSTRUCTIONS
2. HEED ALL WARNINGS
3. FOLLOW ALL INSTRUCTIONS
4. DO NOT USE THIS APPARATUS NEAR WATER
5. CLEAN ONLY WITH A DRY CLOTH
6. DO NOT BLOCK ANY OF THE VENTILATION OPENINGS. INSTALL IN ACCORDANCE WITH THE MANUFACTURER' S INSTRUCTIONS.
7. DO NOT INSTALL NEAR ANY HEAT SOURCES SUCH AS RADIATORS, HEAT REGISTERS, STOVES, OR OTHER APPARATUS (INCLUDING AMPLIFIERS) THAT PRODUCE HEAT.
8. ONLY USE ATTACHMENTS/ACCESSORIES SPECIFIED BY THE MANUFACTURE
9. UNPLUG THIS APPARATUS DURING LIGHTNING STORMS OR WHEN UNUSED FOR LONG PERIODS OF TIME.
10. Do not defeat the safety purpose of the polarized or grounding-type plug. A polarized plug has two blades with one wider than the other. A grounding type plug has two blades and a third grounding prong. The wide blade or third prong are provided for your safety. If the provided plug does not fit your outlet, consult an electrician for replacement of the obsolete outlet.
11. Protect the power cord from being walked on or pinched particularly at plugs, convenience receptacles, and the point where they exit from the apparatus.
12. Refer all servicing to qualified service personnel, Servicing is required when the apparatus has been damaged in any way, such as power-supply cord or plug is damaged, liquid has been spilled or objects have fallen into the apparatus, the apparatus has been exposed to rain or moisture, does not operate normally, or has been dropped.
13. For UNITS EQUIPPED WITH EXTERNALLY ACCESSIBLE FUSE RECEPTACLE: Replace fuse with same type and rating only.
14. For UNITS WITH SELECTIVE-INPUT VOLTAGE: This equipment require a different fuse indicated on the equipment rear panel depending on the voltage selector position. Refer servicing to qualified service personnel or equivalent.

FXP-2 MANUAL

FXP-2 has 16 types of effects that can be modified by PC.

FRONT PANEL:



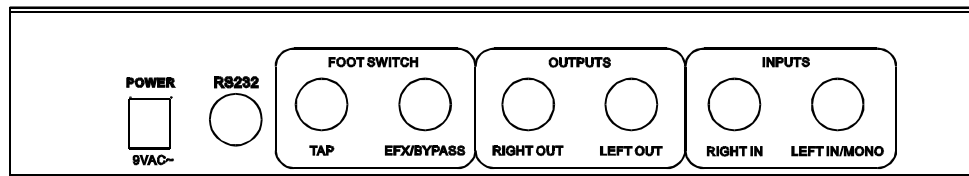
Attention:

Mix knob: The effect volume is maximum at the full clockwise position; the direct volume maximum at the full counterclockwise position(no effect); Effect and Direct volume mix at the middle position.

Variation(Effect delay time) is invalid in some certain effects.

The current effect is tap when the tap indicator is light, you can not switch to other effects now(including the tap effect).

REAR PANEL



ACCESSORIES:

9V AC-DC adaptor
 Instruction manual
 Serial port line
 CD-ROM

16 TYPES OF EFFECTS LIST

- 1 Flange
- 2 Cathedral
- 3 Up M3rd
- 4 Stereo Echo
- 5 Flange/Room
- 6 Delay/Hall
- 7 Delay/Vocal
- 8 Down Octave
- 9 Large Hall
- 10 Room
- 11 Short Plate
- 12 Vocal Plate
- 13 Gated Reverb
- 14 Mono Echo
- 15 Delay
- 16 Chorus